



WORX RACING SEADOO AIR FILTER

PART # - WR04067-KF

MODELS: 2020 GTR 230

INSTALLATION INSTRUCTIONS

- 1 x WR04035 4-inch Seadoo 4 Tec Supercharger Adaptor
- 1 x WR04020-2 Billet Air Filter Bracket 4 inch
- 1 x WR04020-5 Air Filter 4 inch
- 1 x WR04020-6 Air Filter 1 inch with hose clamp
- 3 x 4-inch hose clamps
- 1 x WR04048-5 Mounting Bracket
- 1 x 575mm of Air Filter Hose
- 1 x M8x25mm Button Head
- 1 x M8 washer
- 1 x M8 Nyloc Nut

IMPORTANT: READ ALL INSTRUCTIONS BEFORE PROCEEDING WITH INSTALLATION

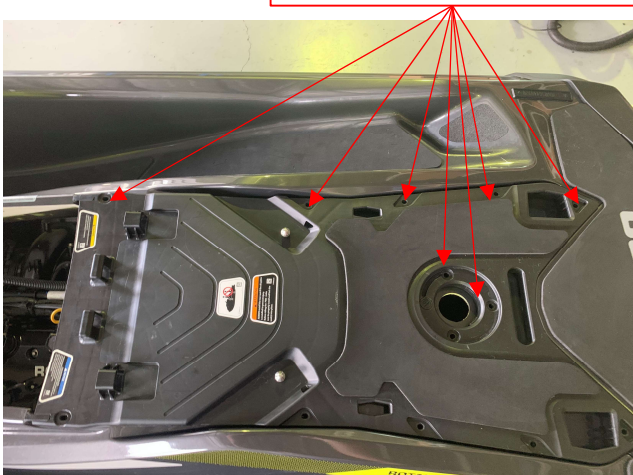
- 1- Make sure ski is secure and on a flat surface. Remove lanyard and disconnect battery.
- 2- Pull the rear plastic and seat housing off the ski.
- 3- Disconnect engine breather hose from intake. Remove OEM air intake hose from supercharger and off second air filter hose. **NOTE its your choice if you want to pull the full hose out from OEM filter box.**
- 4- Fit WORX supercharger adapter. Add Loctite to 2 bolts and secure. **TIP have the adapter in a 45-degree angel while putting the first bolt in enough so it won't fall out, then spin it at the adapter around and put the second one in and tighten both up as you can reach both.**
- 5- Connect the 4-inch adapter to the mounting bracket before fitting to the ski. **Tip for best fit we recommend putting it in the left positioning point on the adapter**
- 6- Drill hole position for side mounting bracket location. Note the measurements for hole locations are on final page
- 7- Bolt mounting bracket to the ski with the M8x25mm bolt, washer and nut through the drilled hole
- 8- Connect the hose provided to the supercharger adapter on one side and have the other side connect to the 4-inch adapter and tighten with hose clamps provided.
- 9- Finally put on the pod filter to the 4-inch adapter and tighten with hose clamp. Place the breather filter on the breather hose you pulled off first and place in any position where the hose is not creased/ bent on itself.

Thank you for purchasing **Worx Racing components** products. We firmly believe that **Worx Racing Components** products are among the finest watercraft parts available. A great deal of time and effort has gone into the design and development of this product to ensure that it will perform to the highest standard and that installation is a relatively straight forward and simple procedure. If you have any questions or comments on the performance and/or installation of our products please contact us at the numbers listed on page one or through your local **Worx** dealer.

1

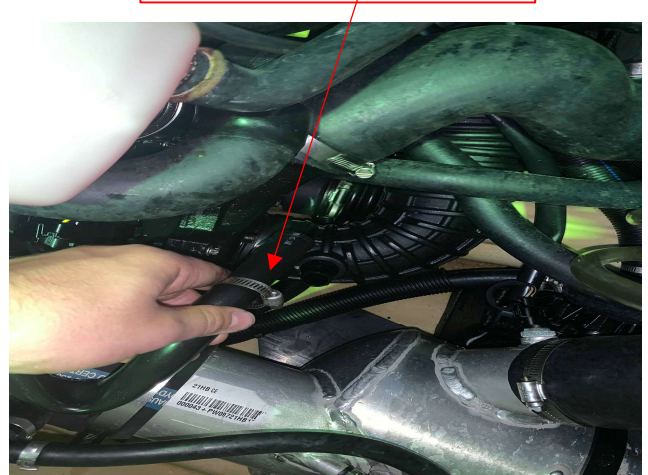
Pull both
seats off

Unscrew both bolts with
torx screwdriver pull panel
off NOTE the front 2 bolts
have 10mm nut and
washer



2

Pull hose off and
fit breather filter
onto the hose



3

Loosen hose clamp and pull hoses off
supercharger



4

Loosen hose clamp



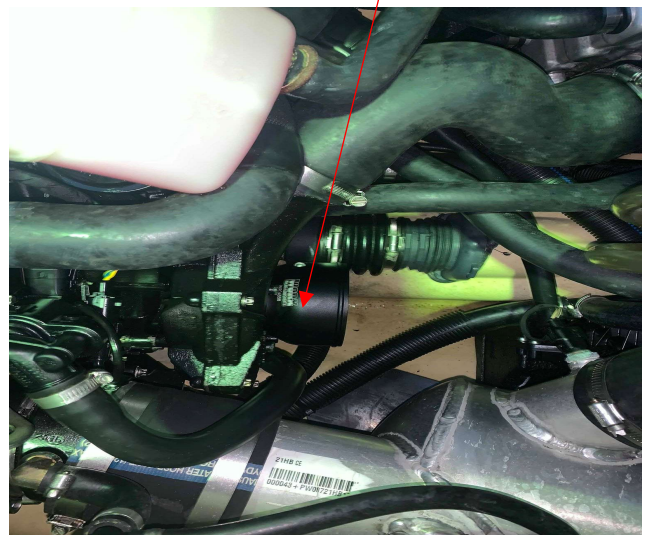
5

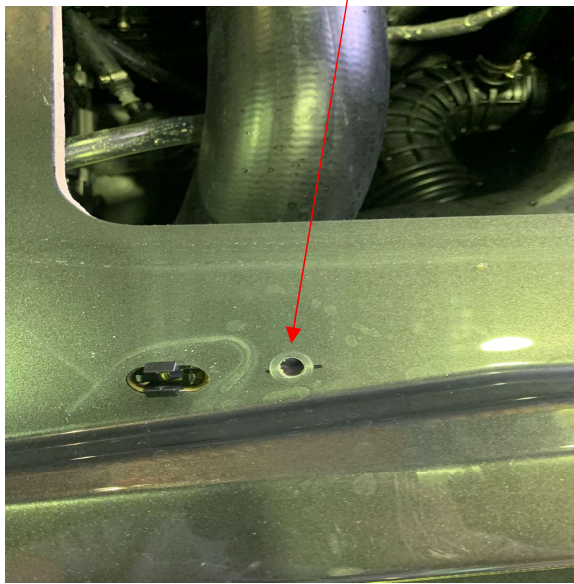
Pull air filter hose out of ski



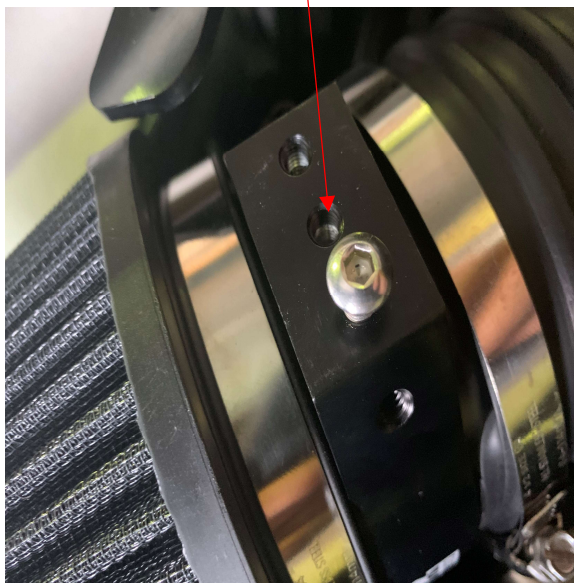
6

Fit supercharger adapter



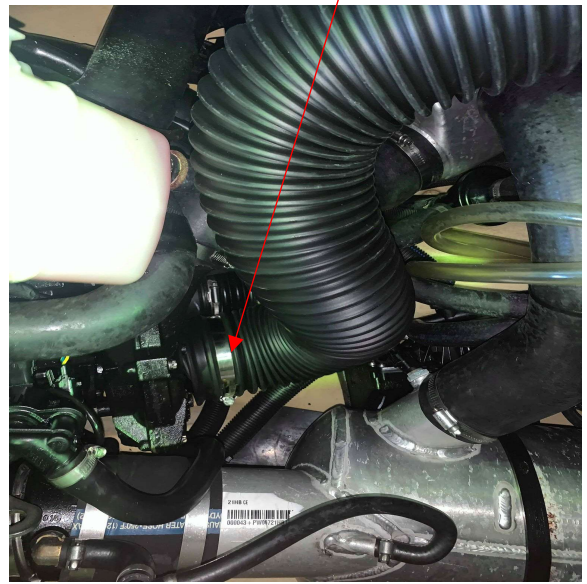


- 9 Install the 4-inch adapter using the left threaded hole as per Diagram to the mounting bracket



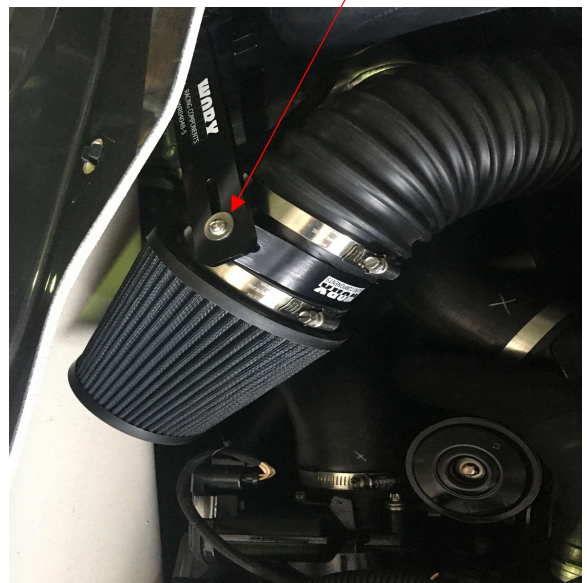
11

Once airfilter kit is fitted
reinstall the rear cover and
seats



10

Fasten the other side of the flexible
hose to the air filter adaptor and
mount the adapter to the hull



Dimensions for drilling the hole

